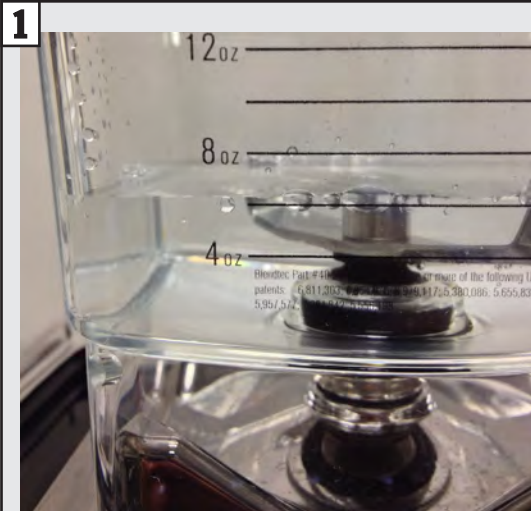
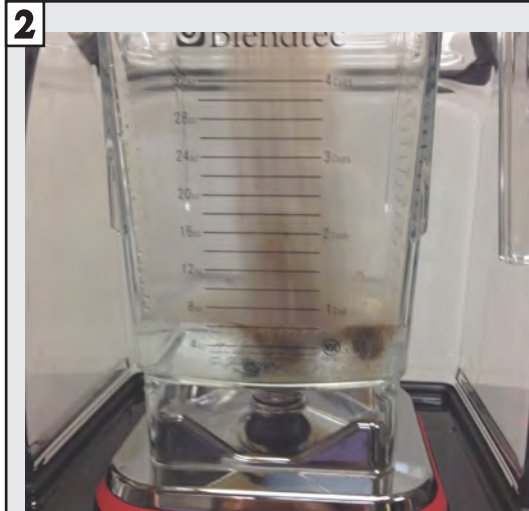


# Preparing Cappuchillo

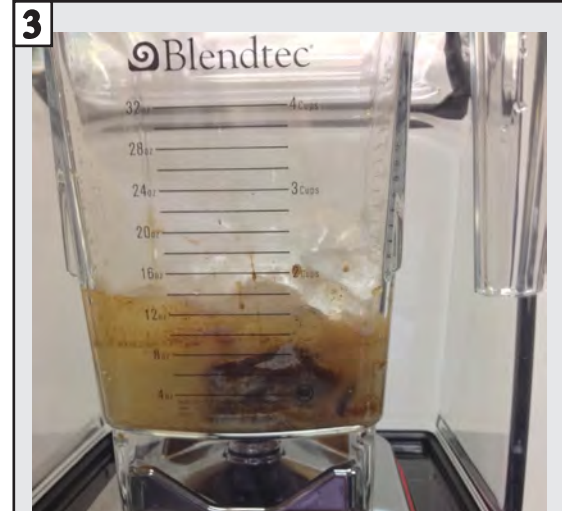
to



1 Measure 6 oz (175 ml) cold water and add to blender jug

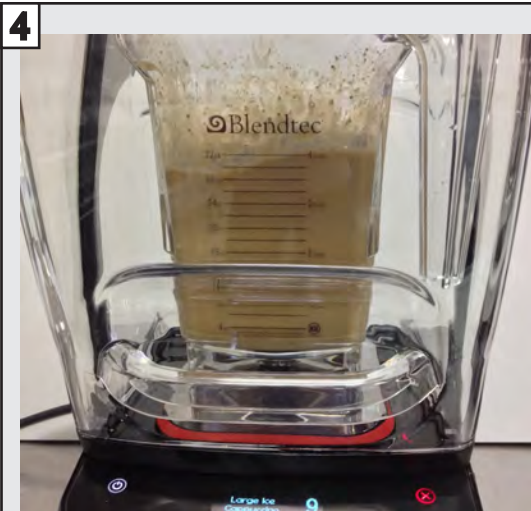


2 Add 1 scoop (1/3 cup) Cappuchillo powder to blender jug



3 Measure just under one full 16 oz cup of ice and add to blender jug (amount of ice depends on cube size)

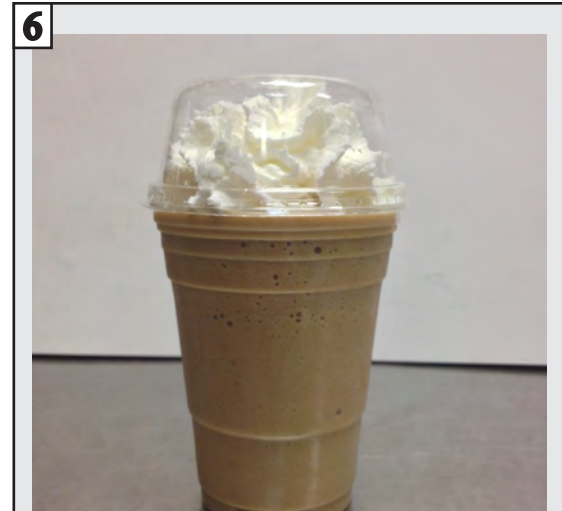
**\*WATER, POWDER AND ICE MUST BE ADDED IN THIS EXACT ORDER TO ENSURE PROPER BLENDING\***



4 Place lid on blender and start blender. Non-programmable blenders run for 30-40 seconds until smooth



5 Pour blended Cappuchillo into 16 oz clear cup and place a dome lid on top



6 Add whipped cream inside dome lid and serve with a straw and napkin

**\*You can make 2 Cappuchillos at once by doubling the above measurements**